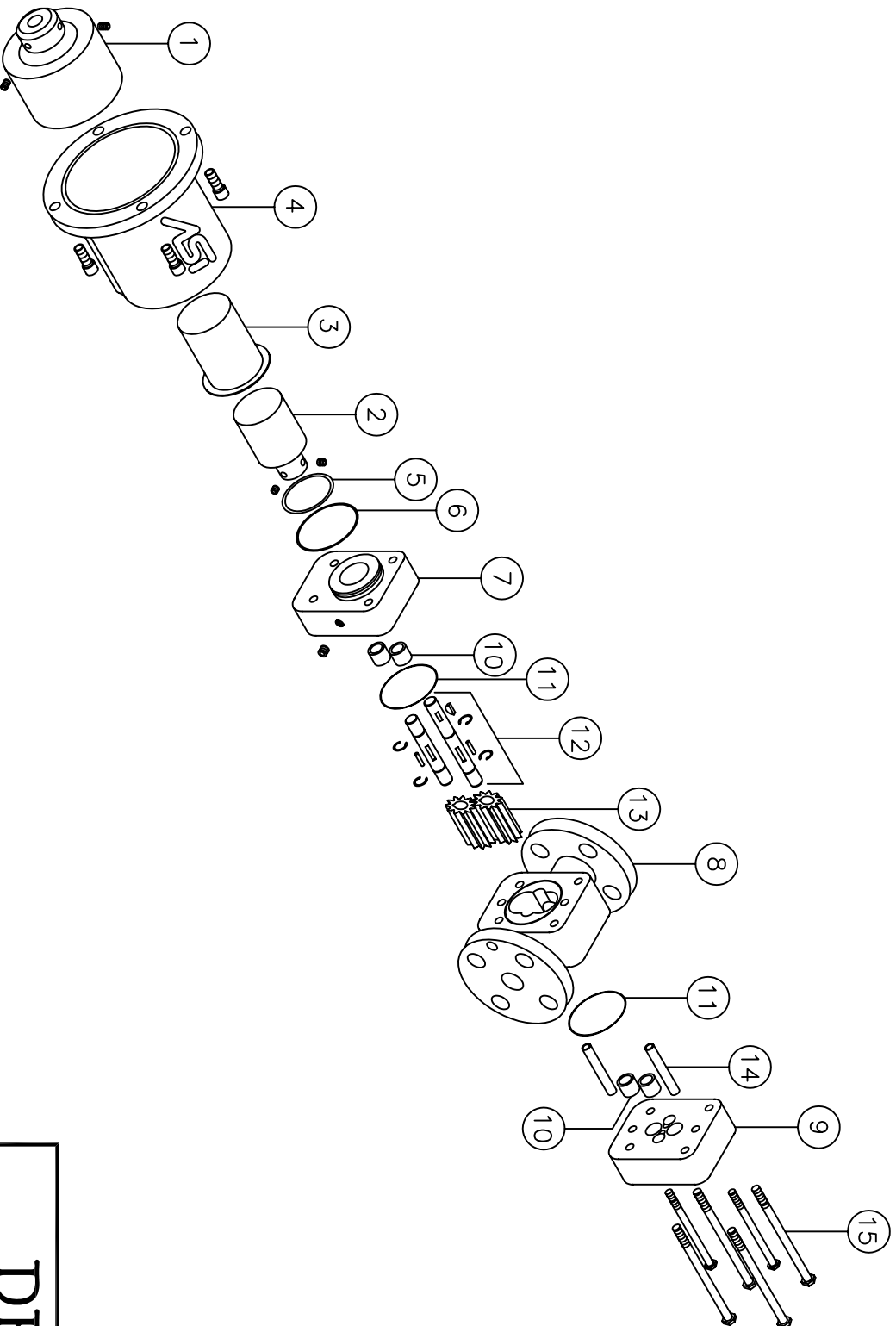


Item	Description
1	Outer Coupling/Set Screws
2	Inner Coupling/Set Screws
3	Containment Shell
4	Mounting Housing/ Bolts
5	Shell Inner Seal
6	Shell Outer Seal
7	Back Endplate
8	Gear Casing
9	Front Endplate
10	Shaft Bearings
11	Endplate Seal
12	Shaft Assy./Keys/C Clips
13	Gear Set
14	Alignment Pins
15	Mounting Bolts (6ea.)



DF-A438-T

Parts List

SCALE: NONE DATE: 11/18/02 EDIT DATE: DRAWN BY: J.F.

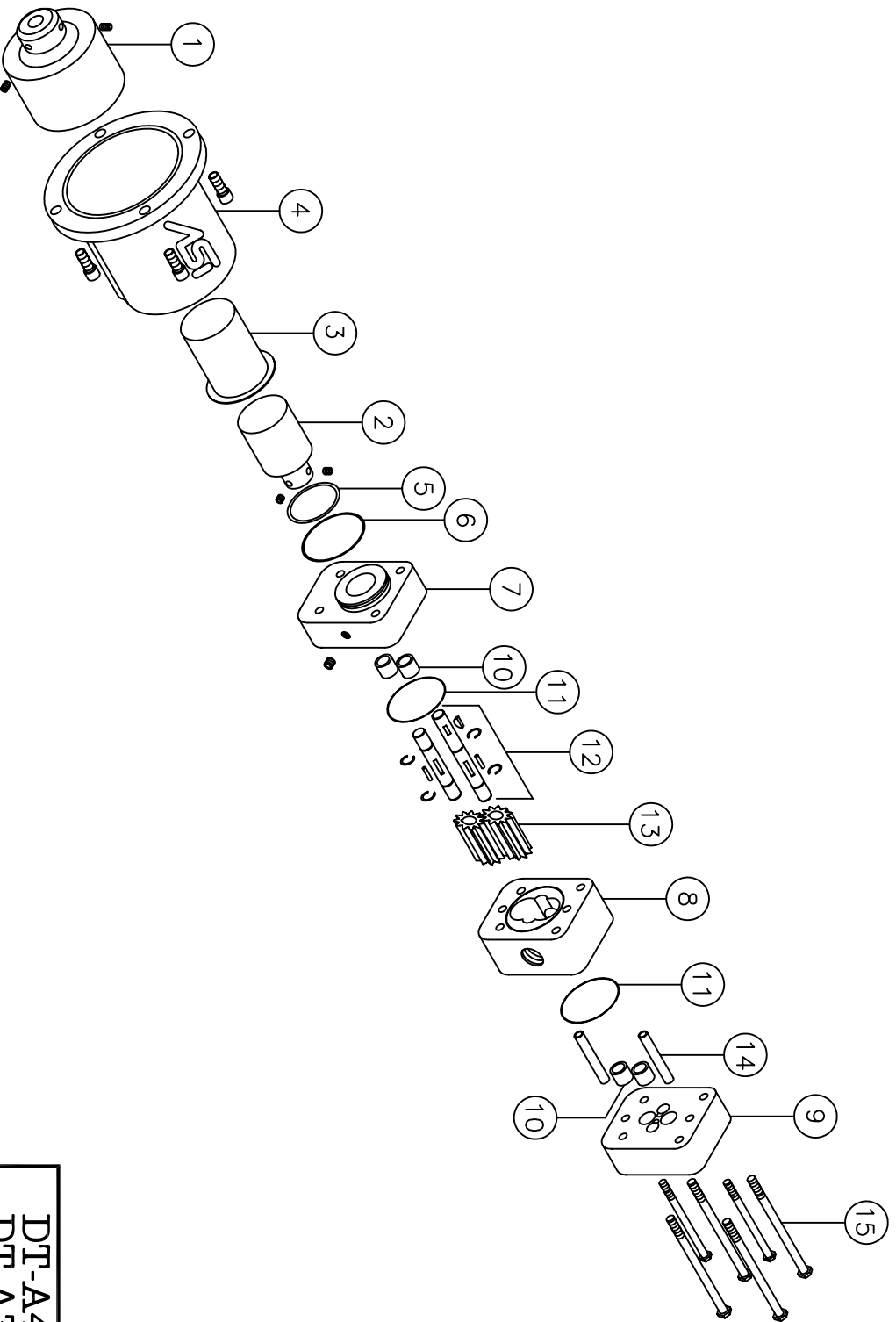


ADDITIVE SYSTEMS, INC.
BROKEN ARROW, OKLAHOMA

DRAWING NUMBER DF-A438T_PL

REV.

Item	Description
1	Outer Coupling/Set Screws
2	Inner Coupling/Set Screws
3	Containment Shell
4	Mounting Housing/ Bolts
5	Shell Inner Seal
6	Shell Outer Seal
7	Back Endplate
8	Gear Casing
9	Front Endplate
10	Shaft Bearings
11	Endplate Seal
12	Shaft Assy./Keys/C Clips
13	Gear Set
14	Alignment Pins
15	Mounting Bolts (6ea.)



Parts List

DT-A438-T / DTP-A483-T
DT-A356-T / DTP-A356-T

SCALE: NONE DATE: 11/18/02 EDIT DATE: DRAWN BY: JF.

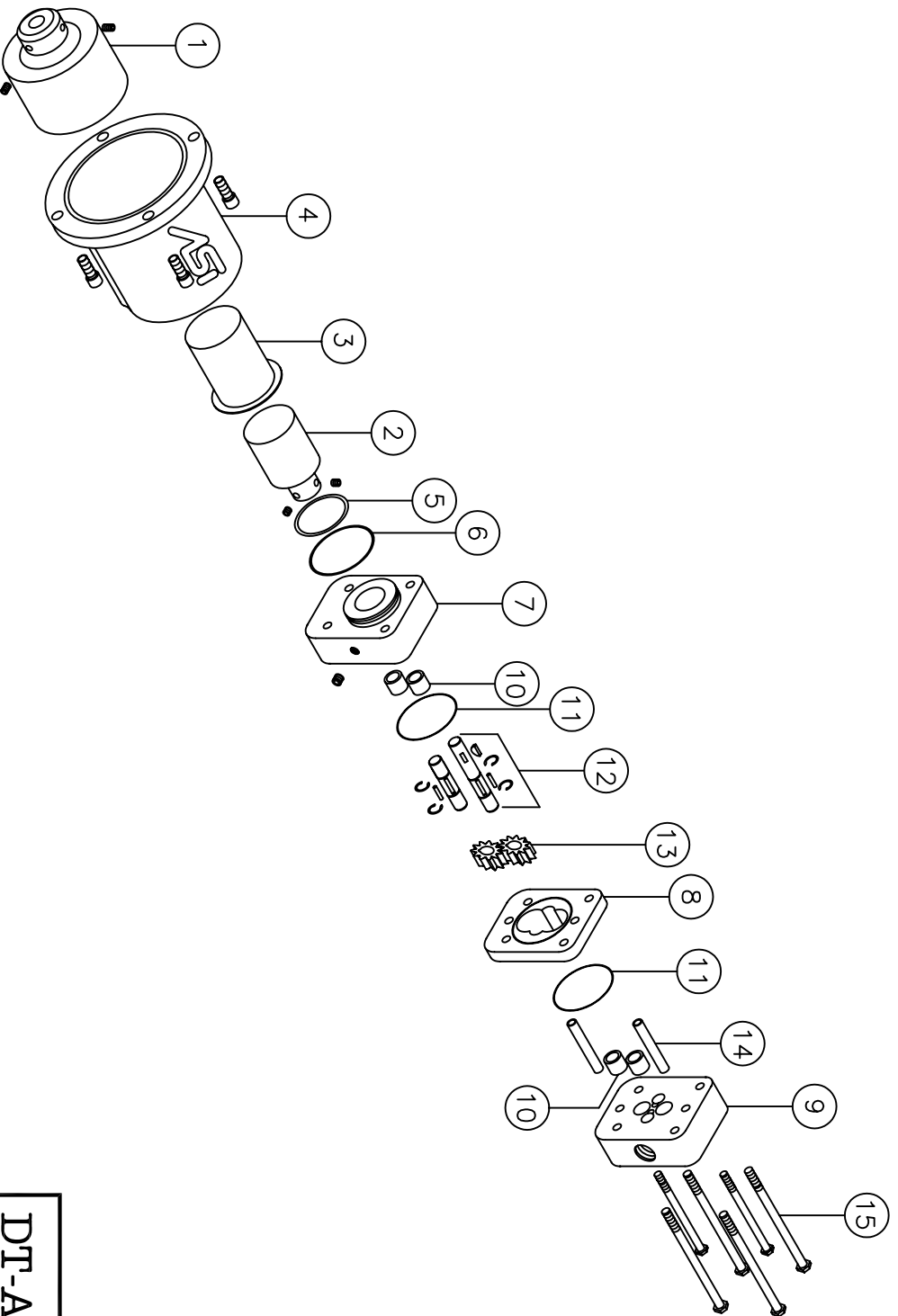


ADDITIVE SYSTEMS INC.
BROKEN ARROW OKLAHOMA

DRAWING NUMBER DTAA483T_PL

REV.

Item	Description
1	Outer Coupling/Set Screws
2	Inner Coupling/Set Screws
3	Containment Shell
4	Mounting Housing/ Bolts
5	Shell Inner Seal
6	Shell Outer Seal
7	Back Endplate
8	Gear Casing
9	Front Endplate
10	Shaft Bearings
11	Endplate Seal
12	Shaft Assy./Keys/C Clips
13	Gear Set
14	Alignment Pins
15	Mounting Bolts (6ea.)



DT-A127-T / DTP-A127-T

SCALE: NONE DATE: 11/18/02 EDIT DATE: DRAWN BY: JF.

Parts List



ADDITIVE SYSTEMS, INC.
BROKEN ARROW, OKLAHOMA

DRAWING NUMBER DT-A127-T_PL

REV.